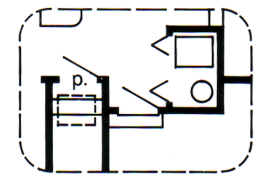
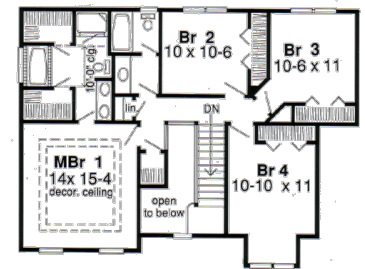
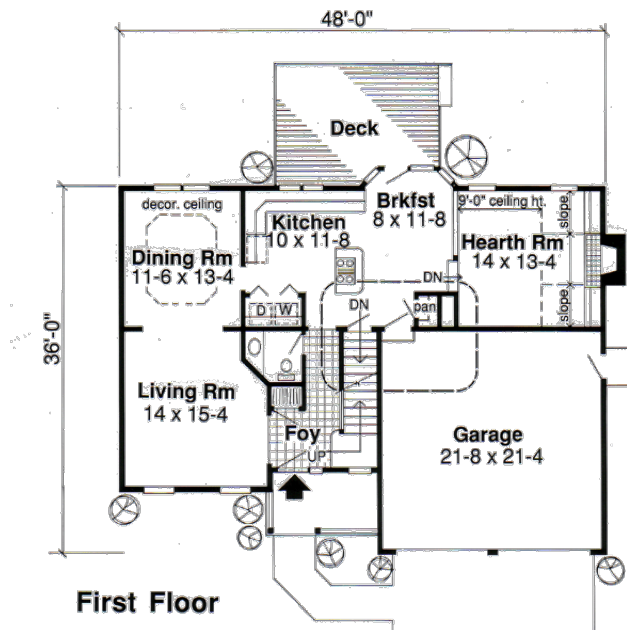


Ashton 2,143 sq.ft.



Specifications

Total Living Area:	2,143 sq.ft.
Main Living Area:	1,086 sq.ft.
Upper Living Area:	1,057 sq.ft.
Garage area:	462 sq.ft.
House Width:	48'0"
House Depth:	36'0"
Bedrooms:	4
Baths:	2 1/2
Max Ridge Height:	27'0"
Primary Roof Pitch:	6/12
Porch:	60 sq.ft.
Deck:	178 sq.ft.
Formal Dining Room:	Yes
Fireplace:	Yes
Main Ceiling Height:	8'
Upper Ceiling Height:	8'
Foundation:	B, C, S
Walls:	2x6
Plan:	20179



Slab/Crawl Space Option

Classic styling with sunken hearth room

The classic clapboard exterior of this home, graced with artful detailing, brings back memories of long ago. But its wide-open interior spaces takes it right into the future. A staircase to the four upper-level bedrooms dominates the central foyer. Back on the main floor, you'll find a huge living room that flows into the formal dining room in an open arrangement. A hallway past the powder room leads to family areas overlooking the rear deck.

Photos or renderings will vary from actual plan.



Oaks Home Collection

Your Oaks home package will include these basic package components:

(Upgrades and substitutions are available on most components)

Exterior Shell Package

- Blueprints
- Treated sill plates
- Floor joists and rim joists
- 3/4" plywood floor
- 2"x6" wall framing
- OSB wall sheathing
- Building wrap
- Roof rafters or trusses per plan
- OSB roof sheathing
- Fiberglass roofing shingles
- Aluminum drip edge
- Roofing felt
- Roof ventilation
- Insulated windows
- Exterior trim
- Fiber cement siding
- Fiber cement soffit & fascia
- Fiber cement trim
- Gutters and downspouts
- Insulated exterior doors
- Exterior locksets
- Nails and hardware

Interior Package

- R-19 wall insulation
- R-30 ceiling insulation
- Insulation baffles
- Drywall,
- Drywall finishing materials
- Colonist primed interior doors
- 2 1/4" fingerjoint Colonial casing
- 3 1/4" fingerjoint Colonial base
- Shelving & closet rods
- Privacy and passage locks
- Fasteners and adhesives

Kitchen and Bath Packages

- Timberlake Tahoe Kitchen cabinets
- Post-formed laminated countertop
- Stainless steel double bowl sink
- Timberlake Tahoe Bathroom vanities
- Cultured marble vanity tops
- Bath cabinets & mirrors
- Tub/shower units



The following materials and services are not supplied by 84 Lumber:

- Foundation
- Steel beams or columns
- Brick
- Stone
- Stucco
- Plumbing
- HVAC
- Electric
- Finish flooring

To order plans call 1-800-359-8484, or see your local 84 Lumber associate.