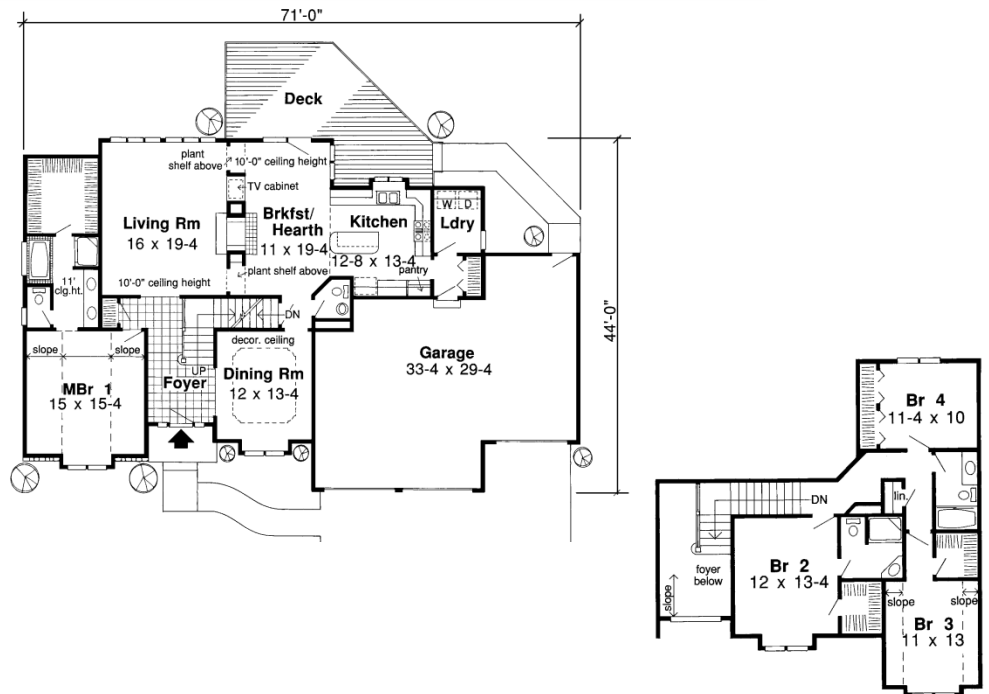


Woodlands 2,545 sq.ft.



Specifications

Total Living Area:	2,545 sq.ft.
Main Living Area:	1,760 sq.ft.
Upper Living Area:	785
Garage area:	797 sq.ft.
Garage Bays:	3
House Width:	71'0
House Depth:	44'0
Bedrooms:	4
Full Baths:	3 1/2
Max Ridge Height:	30'0
Primary Roof Pitch:	7/12
Porch:	43 sq.ft.
Deck:	300 sq.ft.
Formal Dining Room:	Yes
Fireplace:	Yes
1st Floor Master:	Yes
Main Ceiling Height:	9'
Upper Ceiling Height:	8'
Foundations:	B, C, S
Walls:	2x6
Plan:	20199



Stone, stucco, and abundant space

The mixture of stone and stucco gives this elegant home a cozy feel. The spacious foyer leads into a living room, which has a 10-foot ceiling and plant shelf. The breakfast/hearth area is directly off the living room and leads into a spacious kitchen. A powder room sits between the kitchen and the formal dining room. The main-level master suite has a sloped ceiling and huge walk-in closet. The upper level has three more bedrooms, one of which has its own bath.

Photos or renderings will vary from actual plan.



Oaks Home Collection

Your Oaks home package will include these basic package components:

(Upgrades and substitutions are available on most components)

Exterior Shell Package

- Blueprints
- Treated sill plates
- Floor joists and rim joists
- 3/4" plywood floor
- 2"x6" wall framing
- OSB wall sheathing
- Building wrap
- Roof rafters or trusses per plan
- OSB roof sheathing
- Fiberglass roofing shingles
- Aluminum drip edge
- Roofing felt
- Roof ventilation
- Insulated windows
- Exterior trim
- Fiber cement siding
- Fiber cement soffit & fascia
- Fiber cement trim
- Gutters and downspouts
- Insulated exterior doors
- Exterior locksets
- Nails and hardware

Interior Package

- R-19 wall insulation
- R-30 ceiling insulation
- Insulation baffles
- Drywall,
- Drywall finishing materials
- Colonist primed interior doors
- 2 1/4" fingerjoint Colonial casing
- 3 1/4" fingerjoint Colonial base
- Shelving & closet rods
- Privacy and passage locks
- Fasteners and adhesives

Kitchen and Bath Packages

- Timberlake Tahoe Kitchen cabinets
- Post-formed laminated countertop
- Stainless steel double bowl sink
- Timberlake Tahoe Bathroom vanities
- Cultured marble vanity tops
- Bath cabinets & mirrors
- Tub/shower units



The following materials and services are not supplied by 84 Lumber:

- Foundation
- Steel beams or columns
- Brick
- Stone
- Stucco
- Plumbing
- HVAC
- Electric
- Finish flooring

To order plans call 1-800-359-8484, or see your local 84 Lumber associate.